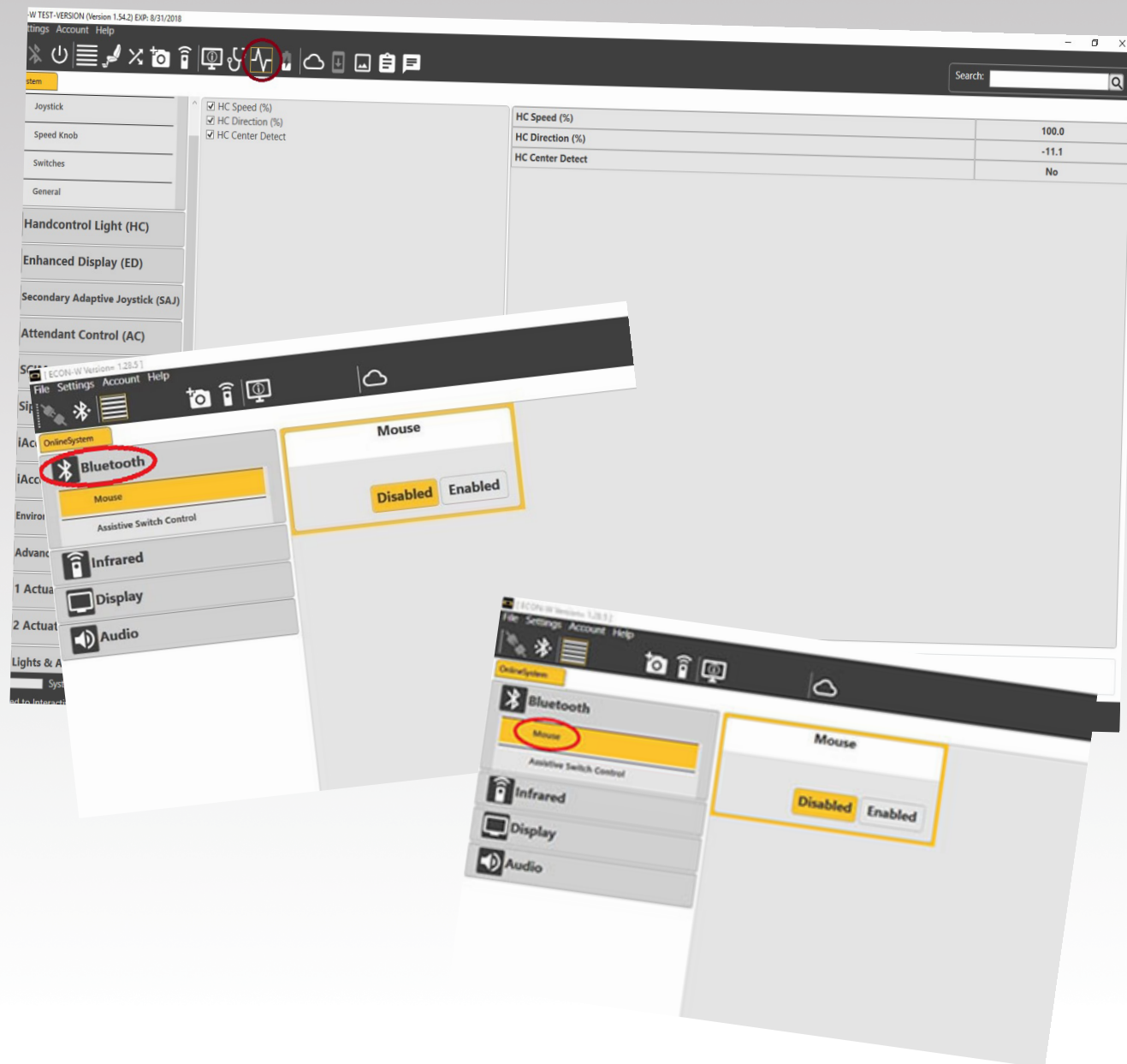


ECON-W

USER LEVEL PROGRAMMER GUIDE



QUANTUM[®]

PROVIDING GREATER INDEPENDENCE

WARNING!

A Quantum Rehab Provider or a qualified technician must perform the initial setup of this power chair and must perform all of the procedures in this manual.

The symbols below are used throughout this owner's manual and on the power chair to identify warnings and important information. It is very important for you to read them and understand them completely.

WARNING!

Indicates a potentially hazardous condition/situation. Failure to follow designated procedures can cause either personal injury, component damage, or malfunction. On the product, this icon is represented as a black symbol on a yellow triangle with a black border.

MANDATORY!

These actions should be performed as specified. Failure to perform mandatory actions can cause personal injury and/or equipment damage. On the product, this icon is represented as a white symbol on a blue dot with a white border.

PROHIBITED!

These actions are prohibited. These actions should not be performed at any time or in any circumstances. Performing a prohibited action can cause personal injury and/or equipment damage. On the product, this icon is represented as a black symbol with a red circle and red slash.

NOTE: This owner's manual is compiled from the latest specifications and product information available at the time of publication. We reserve the right to make changes as they become necessary. Any changes to our products may cause slight variations between the illustrations and explanations in this manual and the product you have purchased. The latest/current version of this manual is available on our website.



Q-Logic 3 Bluetooth Programming

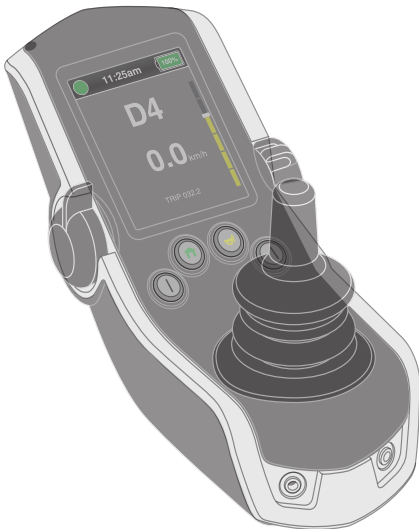
The Q-Logic 3 system features built-in Bluetooth that can be used to program the Q-Logic 3 electronics.

The Econ-W is the programming app for Window devices, located at www.quantumrehab.com.

Econ-I is the programming app for iOS devices, located at the app store.

The Q-Logic 3 system allows for different levels of programming access per the log-in of the programming app:

- **User level access** - intended for the user of the power chair. No log-in is required, select continue without login on the login screen.

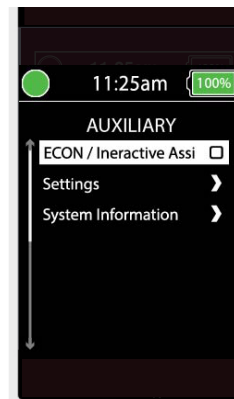


ECON-W

Connecting ECON-W to the Q-Logic 3 system:

1. Turn on the Q-Logic 3 system and navigate to the Aux screen using the mode command.

NOTE: When available, navigate to the Aux screen using the home button and two left inputs.



2. Perform an up or down input to highlight "Econ/Interactive Assist," then perform a right input to enable Econ-W

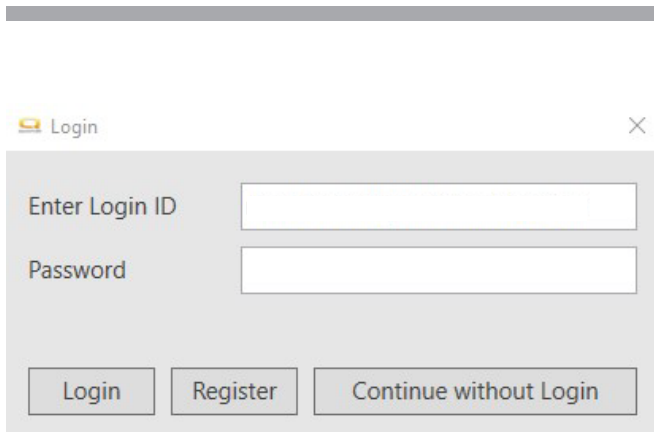


NOTE: The box will be checked when enabled. Another right input will "uncheck" or disable Econ-W.



NOTE: The ID will be different for every chair. This ID will be shown as "Chair-ID#" on Windows device for pairing. Example: Chair-1035.

5. Open Econ-W app, the following login box will appear:



The login screen of the Econ-W app. It features a 'Login' title at the top left and a close button (X) at the top right. Below the title are two input fields: 'Enter Login ID' and 'Password'. At the bottom, there are three buttons: 'Login', 'Register', and 'Continue without Login'.

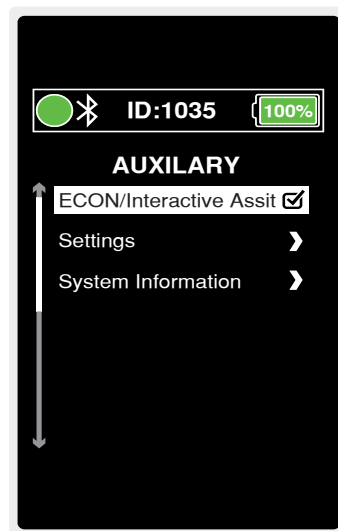
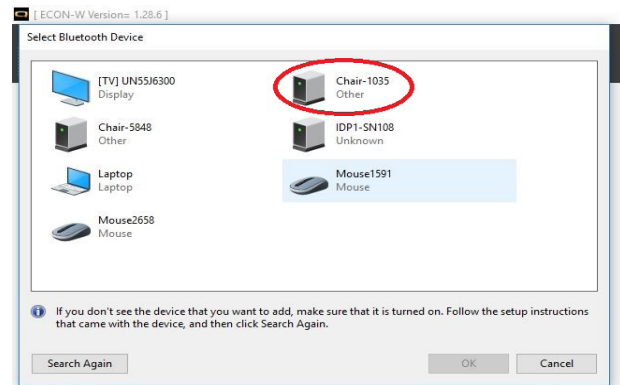
The log-in information is for dealer-level programming and above. Click continue without login" to open Econ-W. You will see the following:



6. Click on the Bluetooth icon.

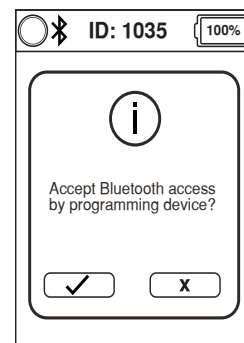


7. A box will pop up for you to select a Bluetooth device, click on the icon with the same ID shown on the Q-Logic 3 screen.



NOTE: If Windows device was not previously paired with the power chair, a pair confirmation will appear on the Q-Logic 3 screen and on the Windows device. Confirm the pair on each to continue.

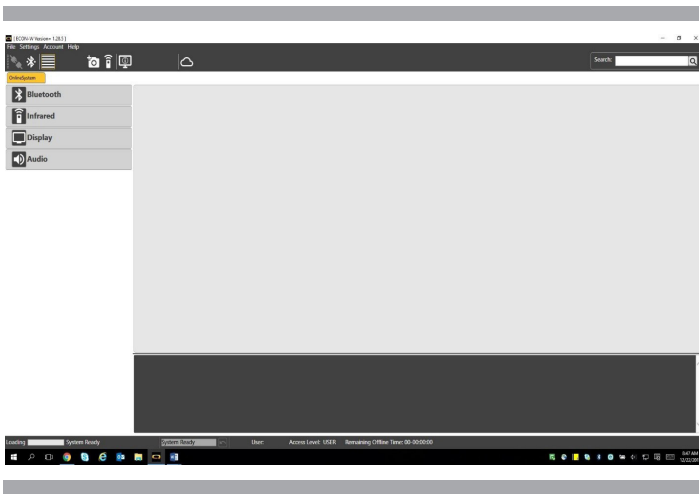
8. The Q-Logic 3 screen will display the following:



Bluetooth

Give a forward command on the chair's input device to accept the Bluetooth connection.

9. Econ-W will display the following:



Econ-W Navigation

1. Top Bar

■ File

- Open - Open an xpa (Q-Logic 3) file
- Recent Files - List of xpa files recently open
- Properties - Dealer only
- Save - Save any changes made to open xpa file
- Save as - Save open xpa file or connected chair as an xpa file
- Exit - Exit Econ-W

■ Settings

■ Settings

- Language - Select language displayed on Econ-W
 - English
 - Deutsch
 - Italiano
 - Francais
 - Español
- XPA Language - Opens pop-up box to select what languages xpa files will be saved as (more than one language can be chosen).
- Check for online updates - allows Econ-W to download latest version of Econ-W upon opening the programming app (requires Internet connection).
- Delete Cashe Files - Delete local files Econ-W uses to speed up operation.
- Set Clock Time - Open pop-up window to adjust the time and date of the connected Q-Logic 3 system.
- Access Level - Change the access level to programming parameters (dealer and above only).

■ Account

- Revalidate Access - Revalidate log-in access (only used for dealer and above access).
- User Details - Open pop-up window that displays details of the logged in individual (relevant for dealer and above access levels).

■ Help

- Web Update - Opens pop-up box that shows if an update to Econ-W is available. Clicking update in the box will update Econ-W if update is available. (Requires Internet connection).
- About - Opens pop-up box that displays details on Econ-W.



Connect with Cable/Bluetooth (Cable is for dealer only)



Parameter

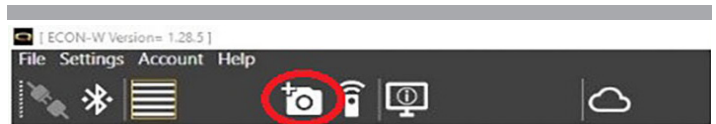
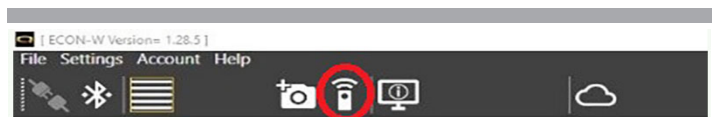


Photo Album Manager



Infrared Remote Control

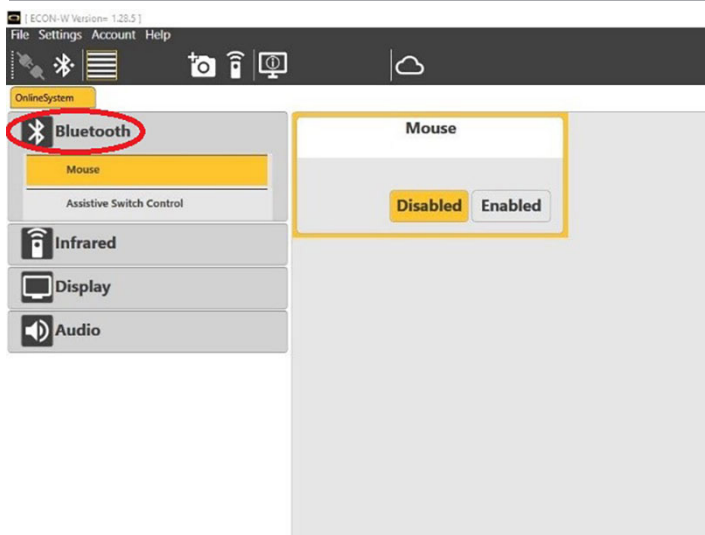


Device List

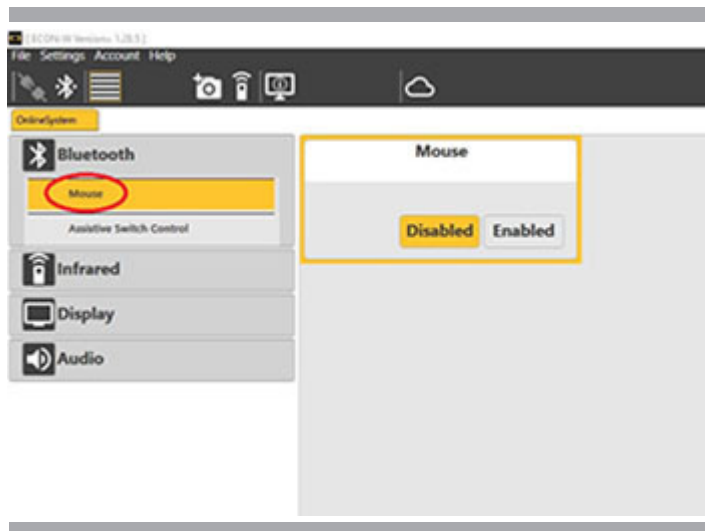


Open Cloud Web Page (Dealer only)

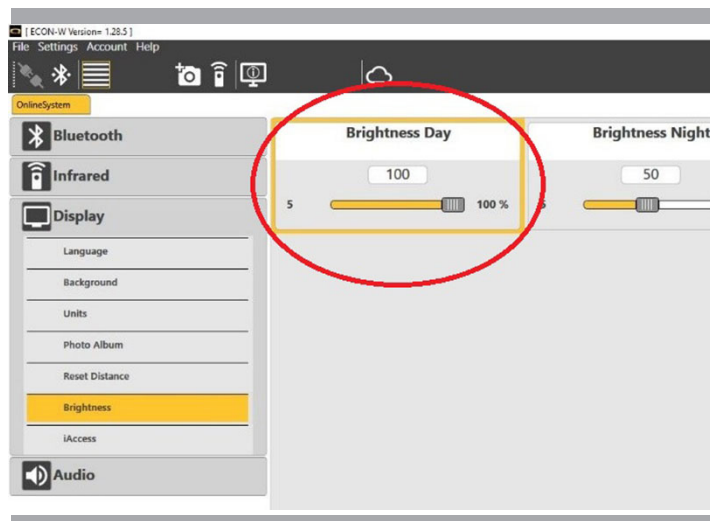
2. Parameter List:



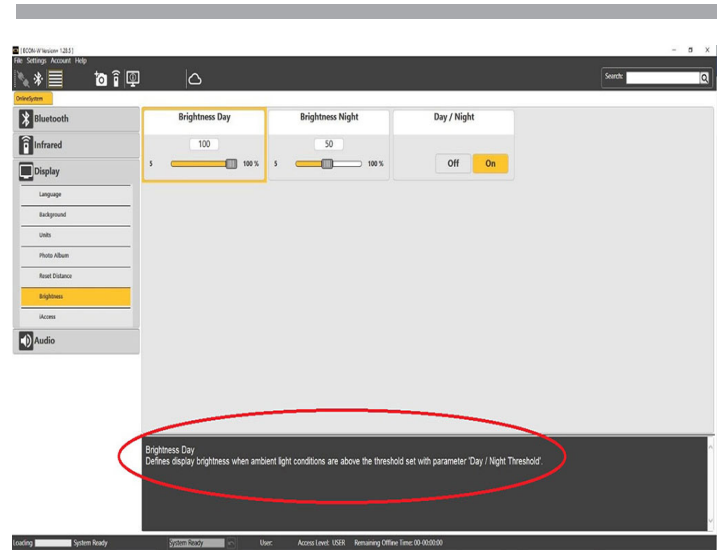
Parameter top menu



Parameter sub-menu

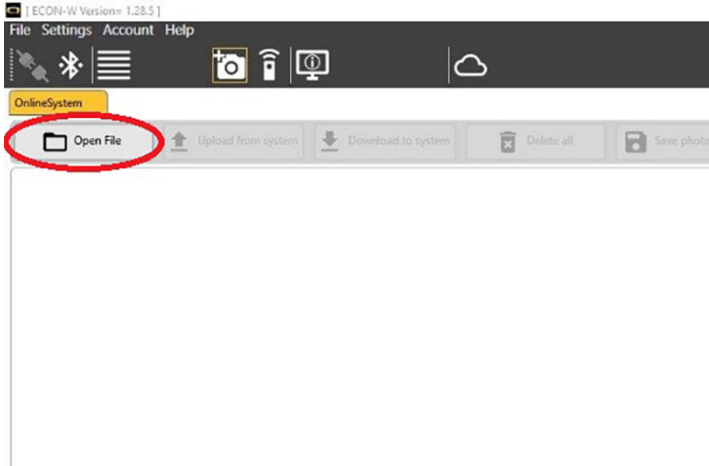


Parameter - Where the adjustments are made

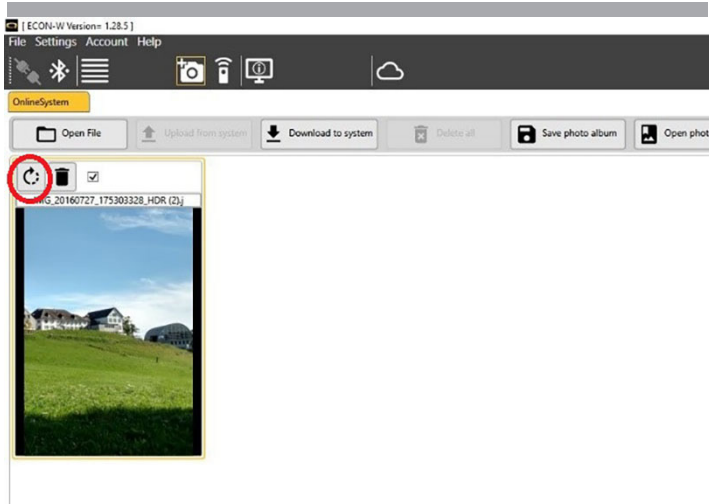


Help text box - Information on how the adjustment will affect the Q-Logic 3 system.

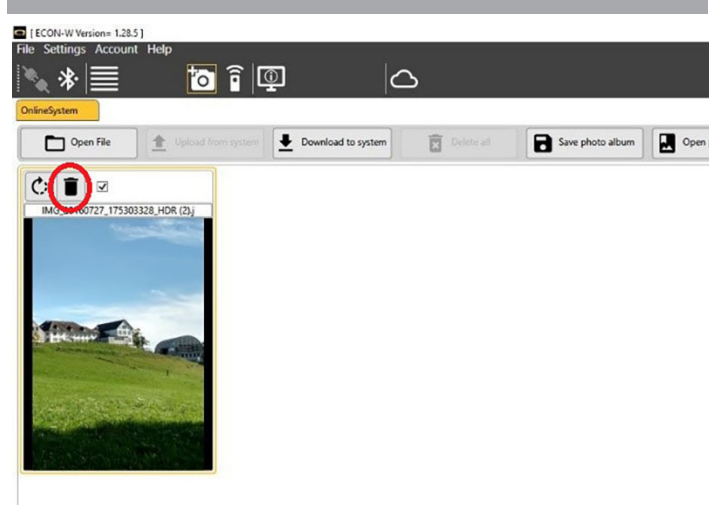
3. Photo Album Manager



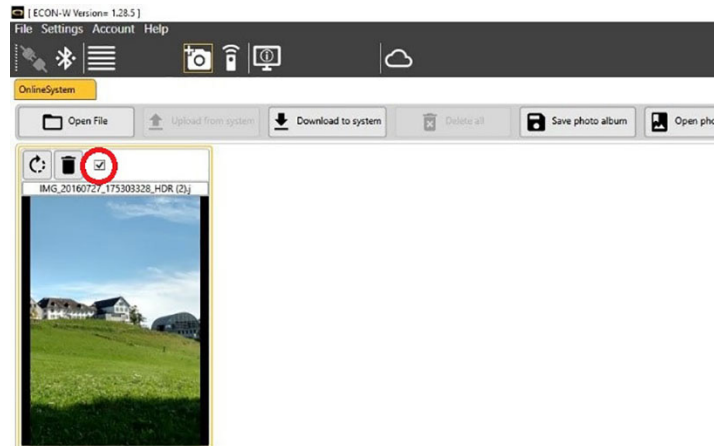
Open File - Opens an image file.



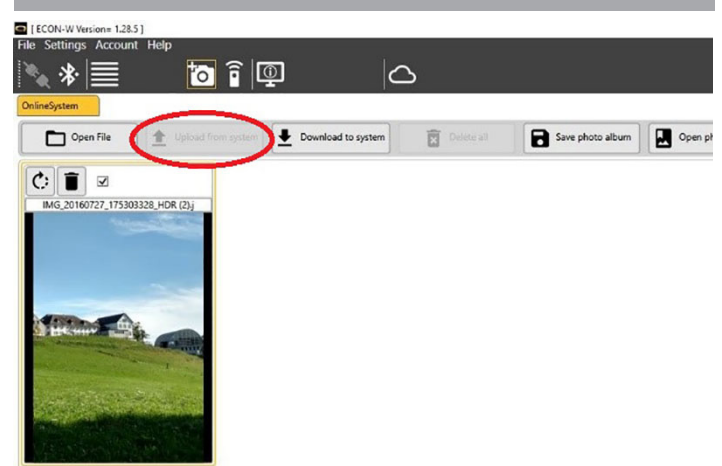
Rotate Image 90° - Use to rotate the image.



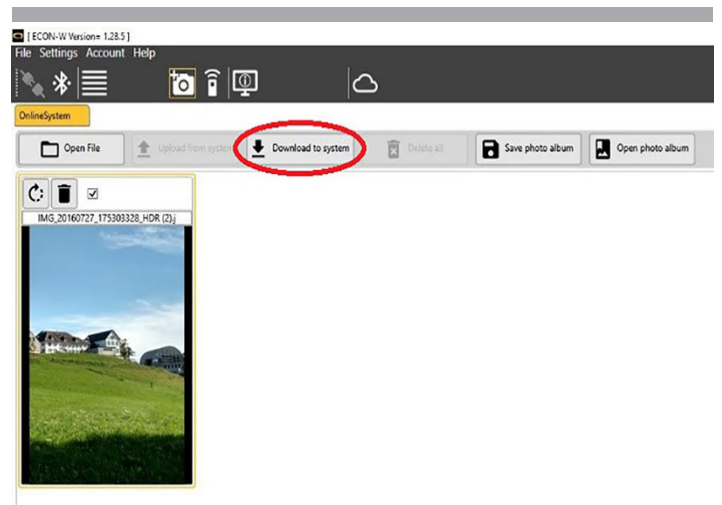
Delete Image - Delete the selected image from the photo album manager.



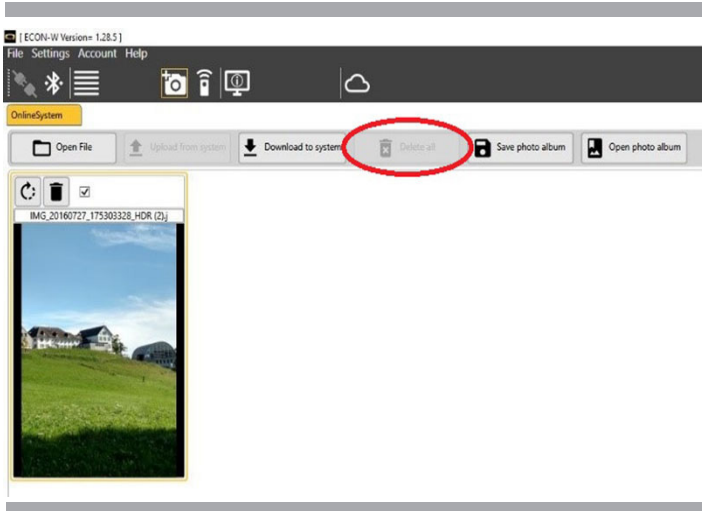
Select image - Select/deselect image.



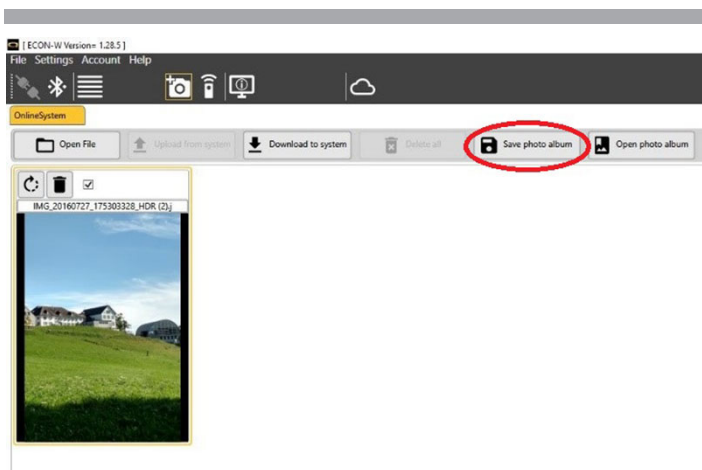
Upload from system - Uploads the photo album currently in the connected Q-Logic 3 system, only available when Q-Logic 3 system is connected and has images in it.



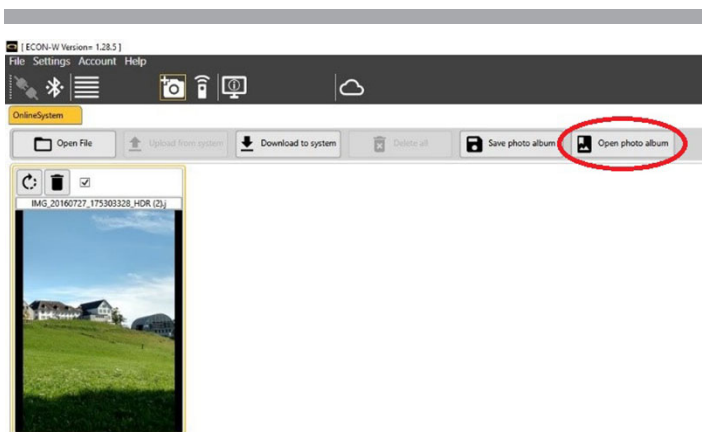
Download to system - Downloads selected images to connected Q-Logic 3 system, only available when Q-Logic 3 system is connected and image is selected.



Delete all - Deletes the images in the connected device, only available when Q-Logic 3 system is connected and has images in it.



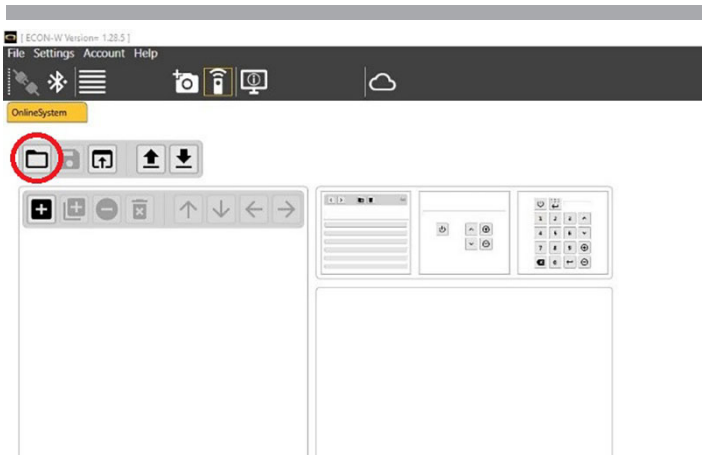
Save photo album - Saves the selected images, to computer, as a photo album for later use.



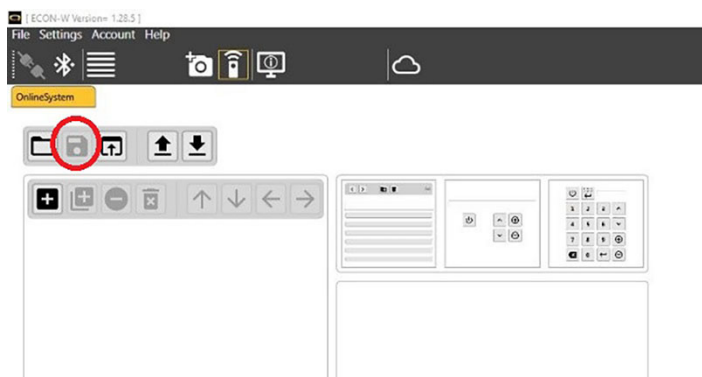
Open photo album - Open previously saved photo album.



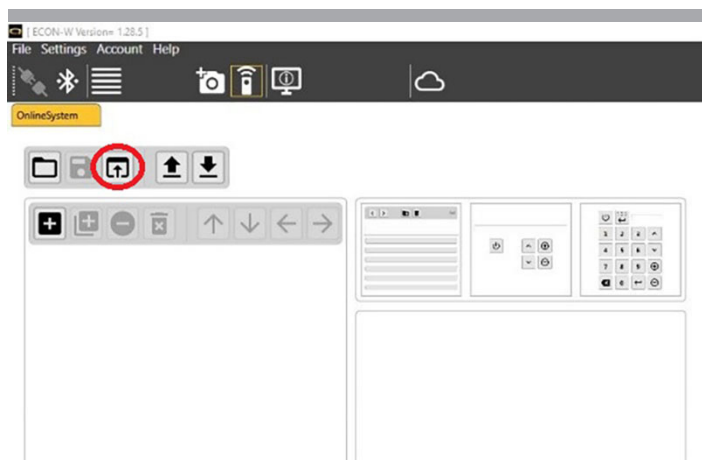
4. Infrared Remote Control



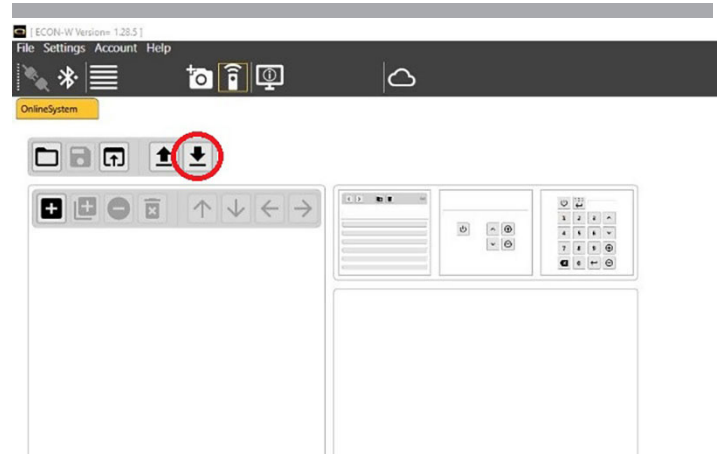
Open IR project - Open a previously saved IR project.



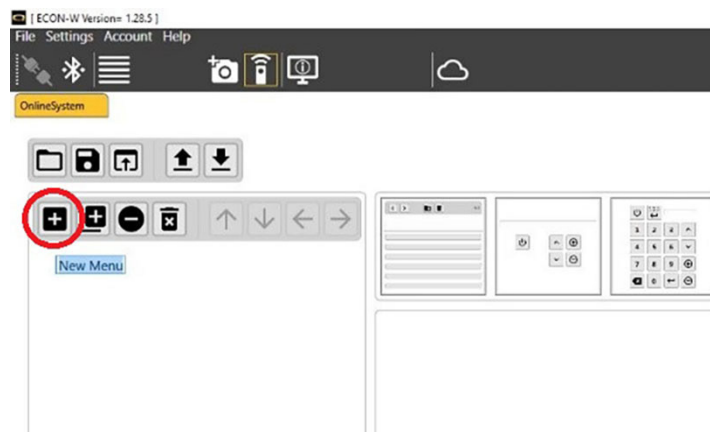
Save IR project - Saves the current IR project to computer for later use.



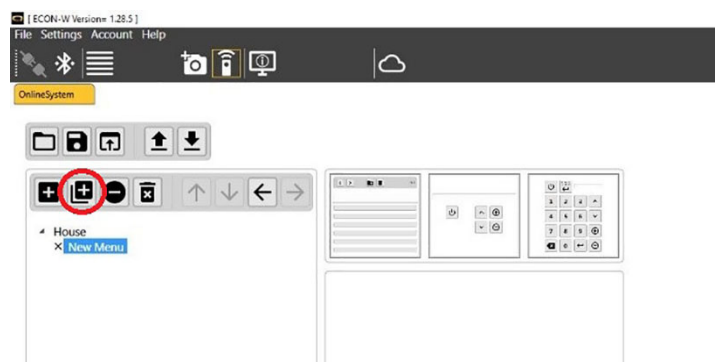
Import IR project - Open previously saved IR project/import IR template from cpf file (Q-Logic 3).



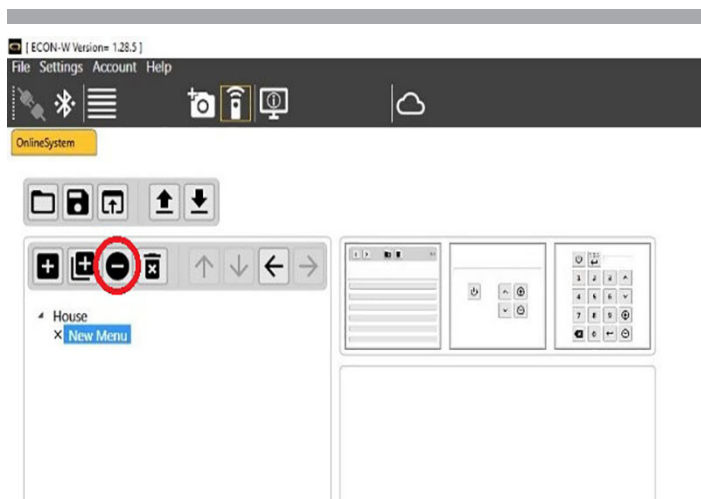
Load IR Project from device - Loads the IR project from the connected Q-Logic 3 system to the programming app.



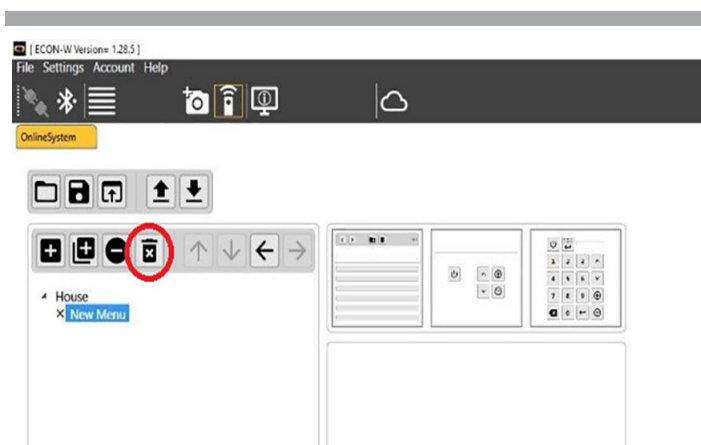
Save IR project from device - Saves the current IR project from the programming app to the connected Q-Logic 3 system.



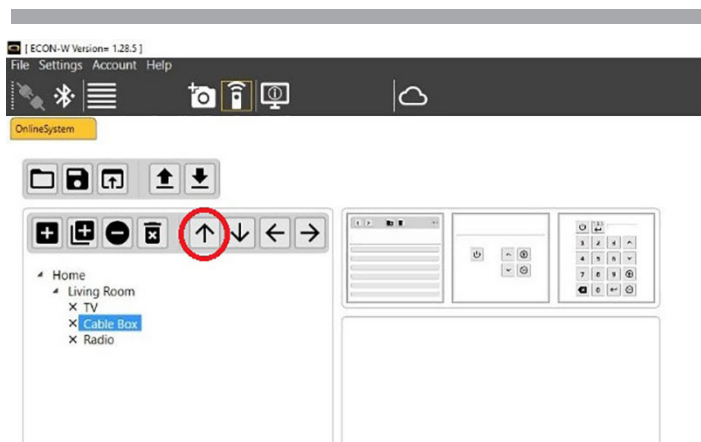
Add new menu entry - Adds a menu entry to the template, the "New Menu" text can be edited by clicking on the highlighted text. This text will be displayed on the Q-Logic 3 system in the IR menu.



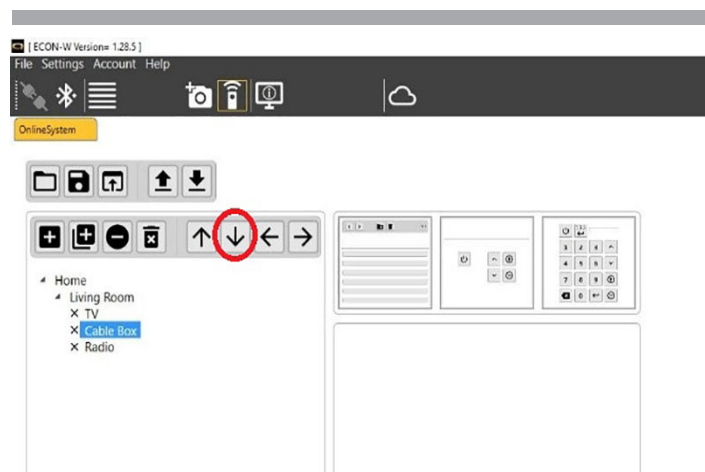
Delete Menu Entry - Deletes all highlighted menu/sub-menu entry.



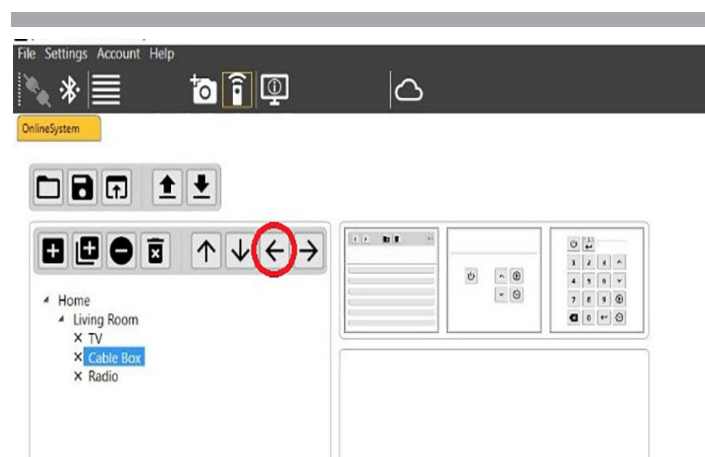
Delete All - Deletes all menu entries.



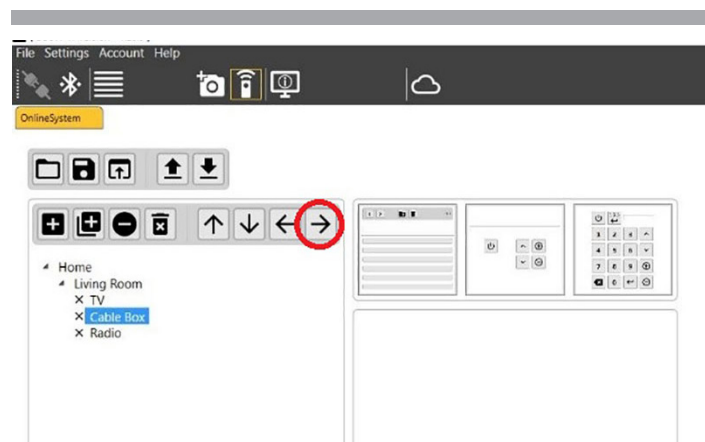
Move Menu Entry Up - Moves the highlighted entry up in the menu/sub-menu.



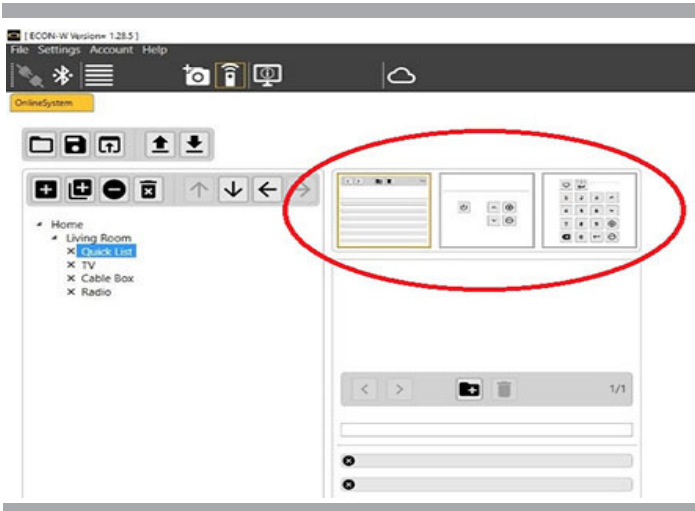
Move Menu Entry Down - Moves the highlighted entry down in the menu/sub-menu.



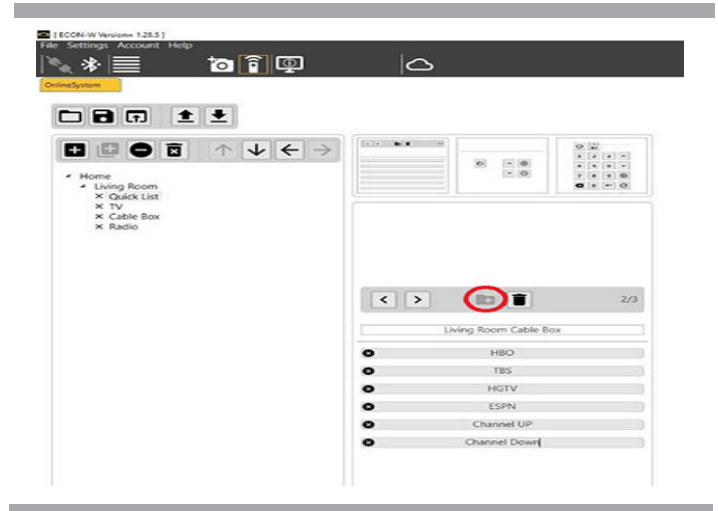
Move Menu Entry Up One Level - Moves the highlighted entry up from the level it is in.



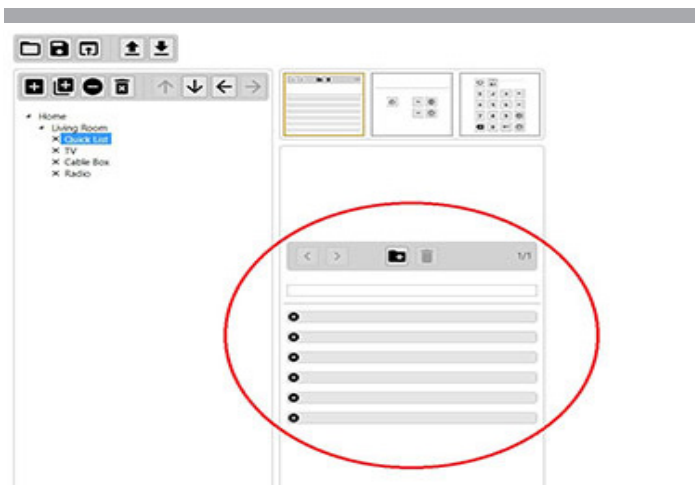
Move Menu Entry Down One Level - Moves the highlighted entry down from the level it is in.



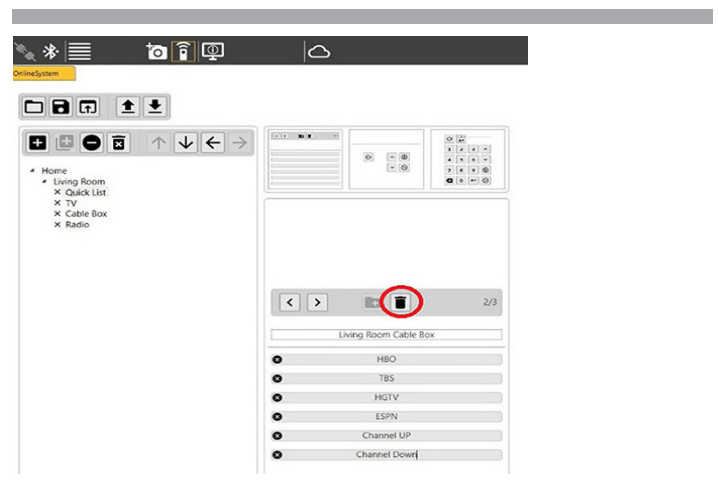
Template buttons - Choose the style IR template for the highlighted menu entry.



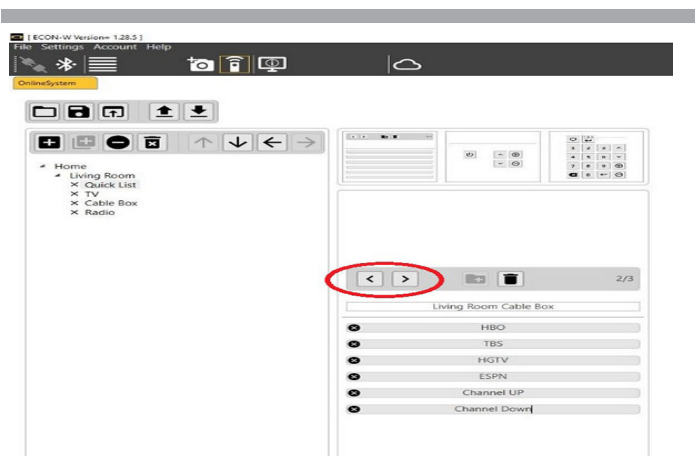
Add page - Adds page to list template.



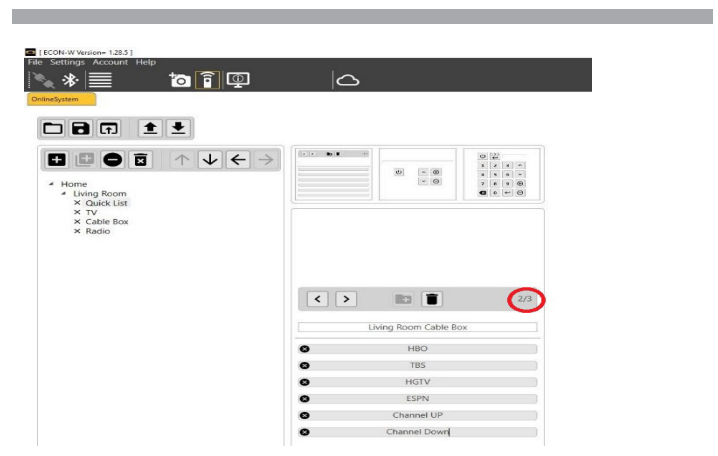
List Template - Used to create customized functions labeled with text.



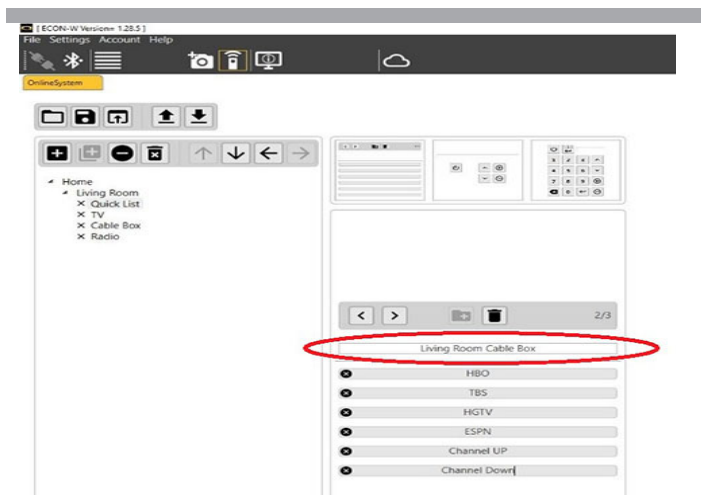
Delete Page - Deletes current page from list template.



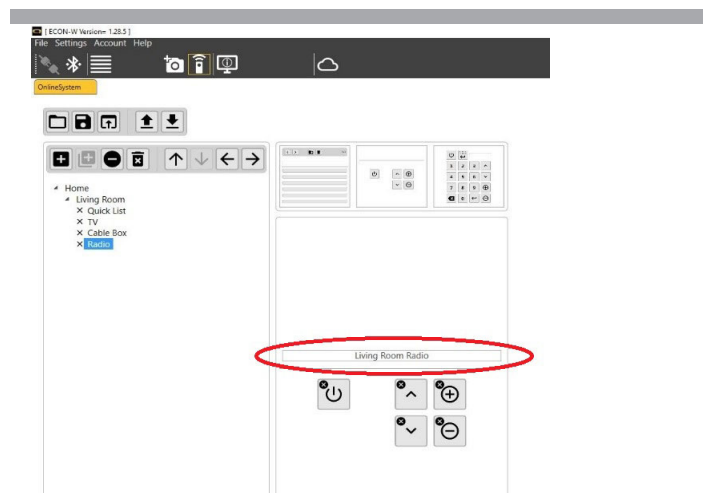
Previous Page/Next Page - Used to move through pages when more than one page is used, total of 3 pages possible.



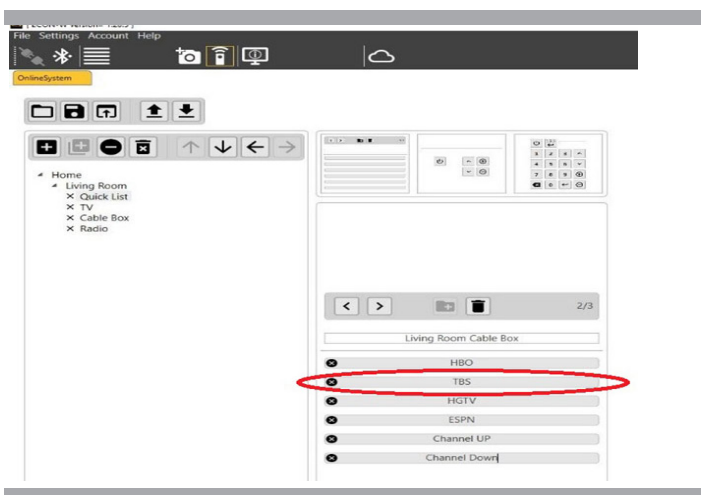
Page number - Displays the current page, example page 2 of 3.



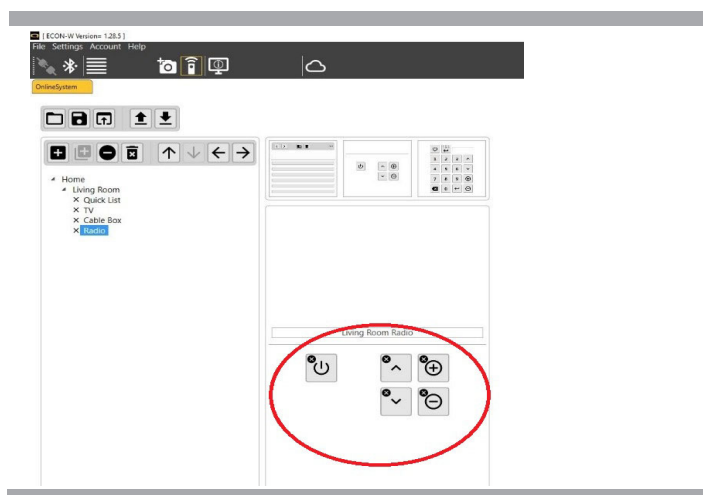
List Title - Title of the list, editable text that will be displayed on the Q-Logic 3 screen for highlighted list template.



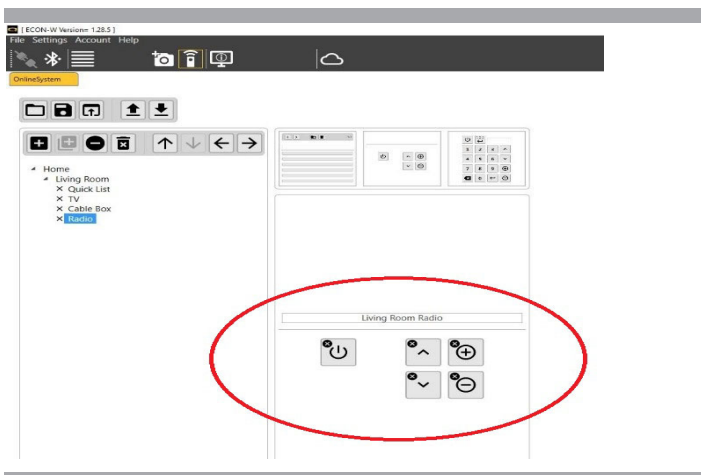
Function Remote Text - Editable text that will be displayed on the Q-Logic 3 screen for function remote template.



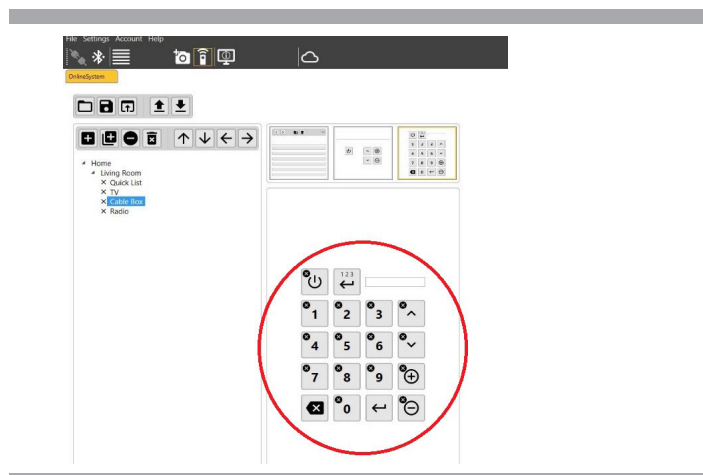
Function Text - Editable text that will be displayed on the Q-Logic 3 screen for the IR function assigned.



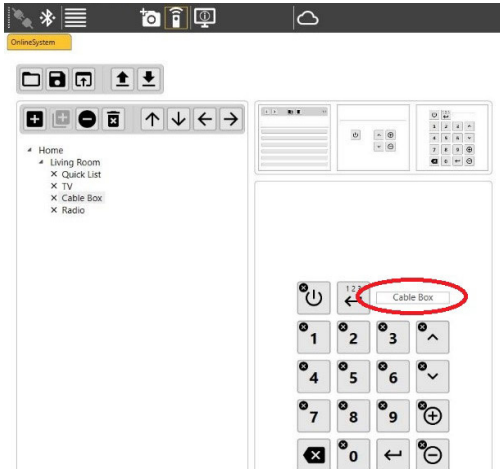
Function Buttons - Button typically assigned with an on/off, channel up/down and volume increase/decrease.



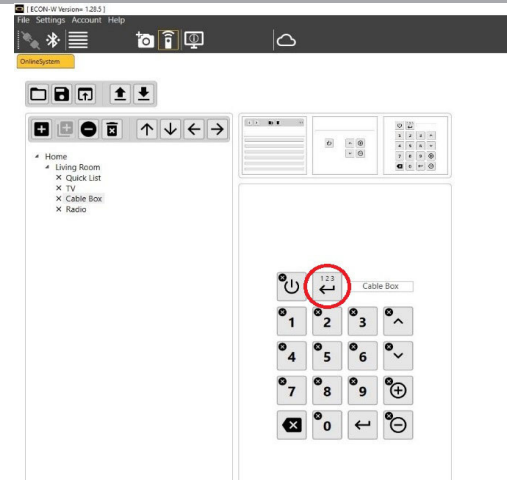
Function Remote - Used to create functions from simple remote.



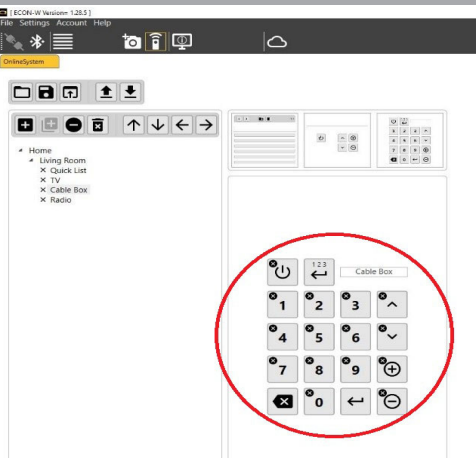
Remote - Used to create functions of typical remote control.



Remote Text - Editable text that will be displayed on the Q-Logic 3 screen for remote template.



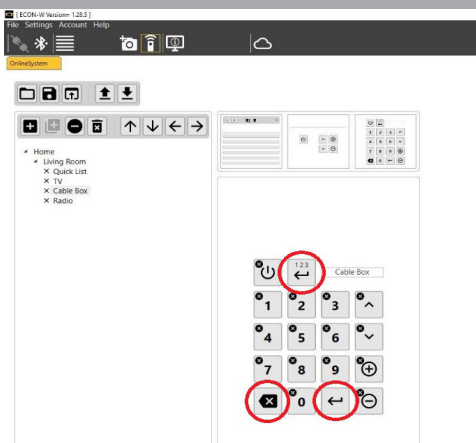
Channel build toggle - Button used to toggle between sending a single digit and building a channel with multiple digits. Button changes color on Q-Logic 3 screen when toggled.



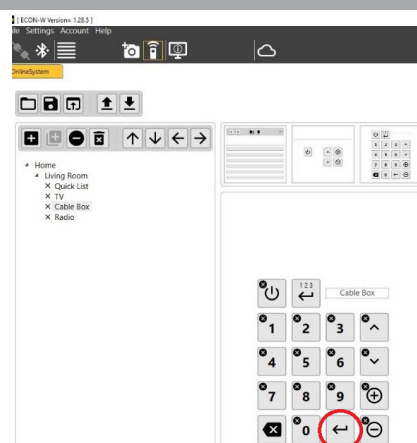
Function Buttons - Buttons typically assigned with on/off, numbers, channel up/down and volume increase and decrease.



Backspace button - Button used to remove a digit during channel build mode.

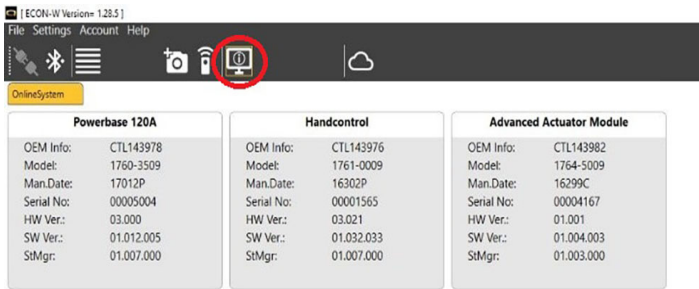


Channel build buttons - Buttons used to create and send a multi-digit channel.



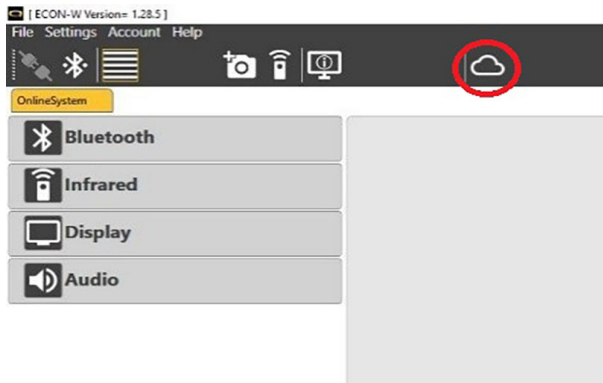
Send Channel Button - Button used to send the built channel.

5. Device List



Device List - Displays the Q-Logic 3 modules on the power chair, along with each module: part number, manufactured date, serial number, hardware version, and software version.

6. Open Cloud Web Page



Open Cloud Web Page - Opens web portal, for dealer only.

ECON-W

USA

401 York Avenue
Duryea, PA 18642
www.quantumrehab.com

Canada

5096 South Service Road
Beamsville, Ontario L0R 1B3
www.quantumrehab.com

Australia

20-24 Apollo Drive
Hallam, Victoria 3803
www.quantumrehab.com.au

New Zealand

38 Lansford Crescent
Avondale, Auckland 0600
www.pridemobility.co.nz

UK

32 Wedgwood Road
Bicester, Oxfordshire OX26 4UL
www.quantumrehab.co.uk

Netherlands

(Authorised EU Representative)
De Zwaan 3
1601 MS Enkhuizen
www.quantumrehab.eu

Italy

Via del Progresso, ang. Via del Lavoro
Loc. Prato della Corte
00065 Fiano Romano (RM)
www.quantumrehab-italia.it

France

26 Rue Monseigneur Ancel
69800 Saint-Priest
www.quantumrehab.fr

Spain

Calle Las Minas Número 67
Polígono Industrial Urtinsa II, de Alcorcón
28923 Madrid
www.quantumrehab.es

Germany

Hövelrieger Str. 28
33161 Hövelhof
www.quantumrehab.de

China

Room 508, Building #4
TianNa Business Zone
No. 500 Jianyun Road
Pudong New Area
Shanghai 201318
www.pridechina.cn



I N F M A N U 5 1 2 5